

2023 SMP Packages I - IV

Sirahuen Guajardo Jr., P.E.

Project Engineer

Efrain Aguirre, P.E.

Project Engineer

Cristian Cavazos

Graduate Engineer I

Florinda Gonzales

Contract Administrator

Stella Manzello

Contract Administrator

Marisol V. Robles

SMWVB Program Manager, SAWS

John Mooneyham, P.E. (KCI)

Engineer of Record for Pkg I

Chris Boentges, P.E. (K Friese)

Engineer of Record for Pkg II

Amy Y. Ramirez, P.E. (WGI)

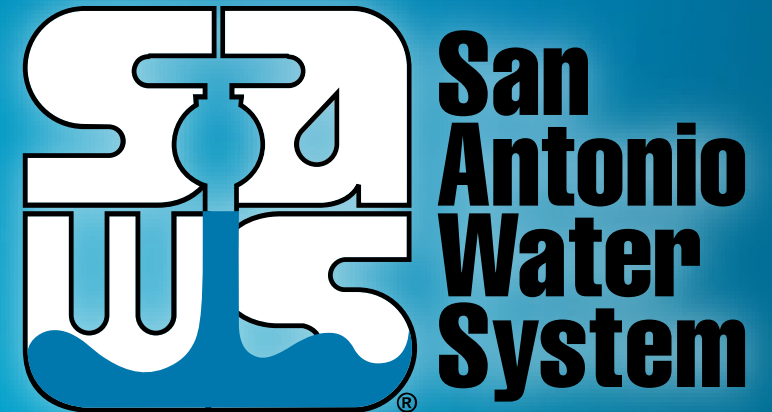
Engineer of Record for Pkg III

Steven Thai, P.E. (BGE)

Engineer of Record for Pkg IV

Marisol V. Robles

SMWVB Program Manager, SAWS



Non- Mandatory Pre-Bid Meeting

August 31, 2022

MAKING SAN ANTONIO
WATERFUL



Oral Statements

Oral statements or discussion during the pre-bid meeting today will not be binding, nor will it change or affect the terms or conditions within the Plans and Specifications of these Projects. Changes, if any, will be addressed in writing only via an Addendum.

Agenda

- General Information
- SMWVB Requirements
- Contract Solicitation Website – Recent Changes
- Vendor Registration
- Key Reminders
- IFB Schedule
- Bid Packet Preparation
- Contract Requirements
- Project Overview
- Special Conditions
- Supplemental Conditions
- Project Details

General Information

- This is a Non-Mandatory pre-bid meeting
- Attendees should sign-in via chat on WebEx
- This presentation and the attendance sheet will be posted to the SAWS website
- Construction services being procured through IFB

Project Information

2023 SMP Package I	
Construction Estimate	\$2,000,000.00
Contract Duration	242 Days

2023 SMP Package II	
Construction Estimate	\$4,100,000.00
Contract Duration	330 Days

Project Information

	2023 SMP Package III
Construction Estimate	\$2,900,000.00
Contract Duration	365Days
	2023 SMP Package IV
Construction Estimate	\$3,900,000.00
Contract Duration	330 Days

Aspirational SMWB Goal

Industry	Aspirational SMWB Goal
Construction	20%

The aspirational SMWB goal is 20% of your total bid price.

Minimum Qualifications for SMWB recognition:

- Certification from the South Central Texas Regional Certification Agency
 - Businesses must be SBE-Certified (including MBEs and WBEs)
 - Texas Historically Underutilized Business “HUB” also recognized
- Local office or local equipment yard
 - Atascosa, Bandera, Bexar, Comal, Frio, Guadalupe, Kendall, Kerr, McMullen, Medina, Uvalde and Wilson

Good Faith Effort Plan (GFEP) FAQs

- **Q: Is the 20% SMWB goal mandatory?**
A: No, but we ask prime contractors to do their best with good faith outreach efforts. If the goal is not met, proof of outreach efforts is required with the submittal.
- **Q: What if I am having trouble finding SMWB subcontractors?**
A: Outreach lists from the South Central Texas Regional Certification Agency are now Excel-exportable at www.sctrca.sctrca.org. If you are having trouble with the downloads, please email the SMWB Program Manager.
- **Q: What if my business is SMWB-certified? Do I need to find SMWB subs?**
A: If your firm is SMWB-certified, you will most likely meet the goal. However, the GFEP is a required document, and a good faith outreach effort is still necessary.
- **Q: Do I need to include all my subcontractors in the GFEP or just those that qualify towards the SMWB goal?**
A: All subcontractors need to be included in the GFEP, even those that may not count towards the SMWB goal.
- **Q: What if I have questions about the GFEP?**
A: Please contact the SMWB Program Manager at 210-233-3420, or at Marisol.Robles@saws.org. GFEP questions can be asked at any time before the submittal is due.

Post Award: Subcontractor Payment & Utilization Reporting (S.P.U.R.) System

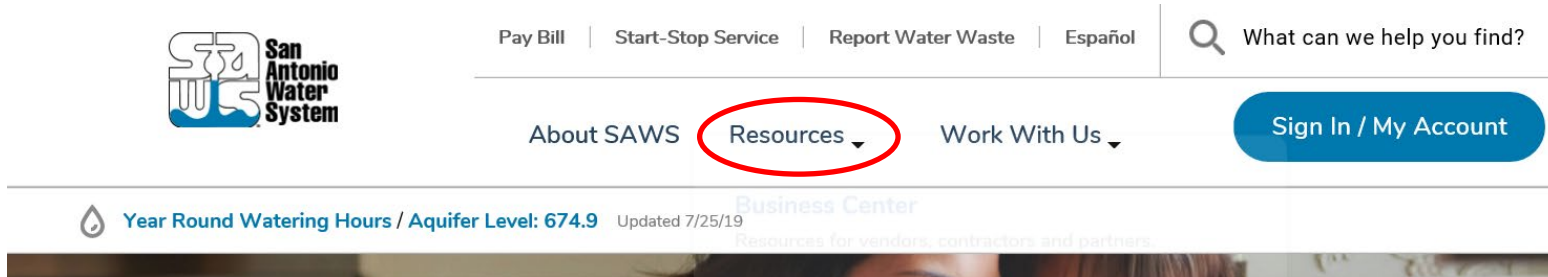
1. Subcontractor & Supplier Payment Tracking
2. Subcontractor and Supplier Additions or Substitutions
3. Must be Current and Accurate before Retainage is released

<https://saws.smwbe.com>

The screenshot shows the homepage of the San Antonio Water System's Subcontractor Payment & Utilization Reporting System. The page features a blue header with the San Antonio Water System logo on the left, "OUR MAIN SITE" in the center, and a "CONTACT SUPPORT" button on the right. The main content area has a background image of industrial water treatment equipment. The title "Subcontractor Payment & Utilization Reporting System" is prominently displayed in white text, with a "Log In" button below it. Below the title, there are three columns of links: "System Training" (with a sub-link "Training"), "About the System" (with a sub-link "Information for Vendors"), and "Account Access" (with sub-links "Account Lookup" and "Forgot Password"). At the bottom, a footer states: "The Subcontractor Payment & Utilization Reporting System is powered by B2Cover Software © Copyright 2018."

Contract Solicitations Website – Recent Changes

- To locate the Contract Solicitations website choose Resources



- At the drop down menu choose Contract Solicitations



Vendor Registration & Notification (VRN)

Reasons to Register in the VRN

- Receive bid notices directly in your email “Inbox”.
- Download bid documents.
- Subscribe to specific bids.
- Receive addendum notifications.



Notify Me

Receive updates sent straight to your inbox.

Subscribe

https://apps.saws.org/Business_Center/Contractsol/

Key Reminders

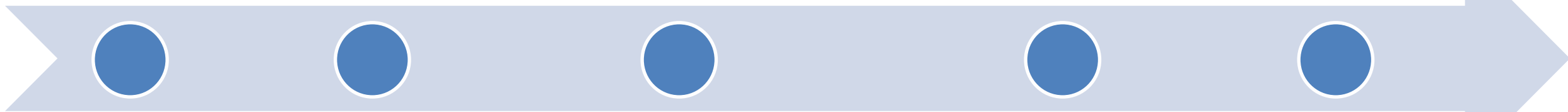
- All questions should be sent in writing to the corresponding Contract Administrator by email or fax.
- Please identify the project by its associated solicitation number.
- Contractors should not contact the SAWS project engineer, the consultants for this project, or any other SAWS staff up until Board award.
- Late bids will not be accepted and will be returned unopened.
- Due to the COVID-19 emergency and to protect the health of the public, SAWS is implementing new procedures for the submission of bids.
- Bids will be received either Electronically or through Sealed bids.
- Electronic bids will be received via the secure SAWS FTP site.
- Sealed bids will be received by Contract Administration, 2800 U.S. Hwy 281 North, Tower II, Customer Center Building, via a drop box located on the left wall when walking through the first set of double glass doors of the main Tower II entry on the north side of the building.
- If bids will be delivered in person to SAWS, Bidders should allow sufficient travel time.

IFB Schedule

Questions Due
September 6, 2022
- 4:00 pm
(Packages I-IV)

FTP Request Deadline
September 19, 2022 (Pkg I)
10:00 am
September 19, 2022 (Pkg II)
2:00 pm
September 20, 2022 (Pkg III)
10:00 am
September 20, 2022 - (Pkg IV)
2:00 pm

Board Award
November 1, 2022



Answers Posted
September 14, 2022 - 4:00 pm
(Packages I-IV)

Bids Due
September 20, 2022 - (Pkg I)
10:00 am
September 20, 2022 – (Pkg II)
2:00 pm
September 21, 2022 – (Pkg III)
10:00 am
September 21, 2022 - (Pkg IV)
2:00 pm

Bid Packet Preparation

- Utilize the Bid Packet Checklist within the specifications
 - Only limited items are required with the initial bid packet
- **Double check** all mathematical calculations and verify all extensions
- Addendums are acknowledged on the Bid Proposals
- Ensure Mobilization & Prep ROW Line Item does not exceed the percentage allowed
- References and contact information must be verified prior to submitting bid(s)
- Within one day of bid opening the apparent Low Bidder shall submit a Baseline Schedule with an assumed NTP date of January 2, 2023.
 - Conflict of Interest Questionnaire, Proof of Insurability (Letter from Insurer or Sample Certificate of Insurance), Company Information Packet, Statement Regarding Ability to Complete the Project, W-9

Contract Requirements

Prevailing Wage Rate and Labor Standards – Section 2.10 of the General Conditions

- Certified payroll to be submitted on weekly basis
- Wage decisions are included within the specifications
- Contractors to utilize LCP Tracker
- Site visits are random and unannounced
- Interviews will be Conducted and will be private & confidential
- Payroll records are subject to review
- All apprenticeship programs will need to be approved by Department of Labor prior to starting
- Contractors are responsible for sub-contractor payroll
- Late payrolls delay contractor payments from SAWWS

Contract Requirements

- Insurance requirements are found in Section 5.7 of the GCs
 - Include General Liability for Construction, Pollution Liability, Installation Floater (in lieu of Builder's Risk)
 - Maintain insurance coverage during the construction of this Project
- Compliant prior to executing the contract
- Will ask for insurance prior to Board award to expedite execution of the contract
 - Any deficiencies must be corrected prior to Board award

Contact Information

Contact Name	Title	Telephone Number	Email address	Project
Stella Manzello	Contract Administrator	210-233-3854	Stella.Manzello@saws.org	Package I & IV
Florinda Gonzales	Contract Administrator	210-233-3914	Florinda.Gonzales@saws.org	Package II & III
Marisol V. Robles	SMWB Program Manager	210-233-3420	Marisol.Robles@saws.org	

Project Overview

- Bids for construction are for specified contracts with mostly open cut replacement:

Contract	Water Scope	Sewer Scope
Package I (Refugio, Blaine, Ward)	2,726 LF of 6 to 8-in	1,090 LF of 8-in
Package II (Glendora, Goodhue & Eisenhauer)	5,233 LF of 6 to 12-in	4,692 LF of 8-in
Package III (Hermine & Bartmer)	4,080 LF of 6 to 8-in	1,820 LF of 8-in
Package IV (San Gabriel)	3,870 LF of 6 to 12-in	2,722 LF of 8-in

- Projects are part of 2023 CoSA's Street Maintenance Program (SMP)
- Contractor is to become familiar with the plans, specifications and the project site.

Project Overview

General Information

- Traffic Control Plans, Bypass Pumping Plan will be responsibility of contractor and at no cost to SAWS
- CPS Energy Power Pole bracing will be reimbursed through an allowance as needed.
 - Contractor to coordinate pole bracing with CPS Energy and SAWS Inspector
- Contractor's Bid Packet Checklist
 - Statement of Bidder's Experience must be submitted with bid
- Submittals can be turned in as soon as receiving notification of contract award after CPMS training (if necessary) has been completed
- Mobilization and Prep ROW are separate pay items per package
 - Not to exceed 15% combined
- Prep ROW includes clearing and grubbing, tree pruning, tree protection.
- Traffic Handling and Barricades will be paid per site
- Project to be constructed per SAWS 2021 Construction Specifications and COSA Standard Specifications for Public Works Construction
- 2022 update to Spec 840 for water tie-ins

Project Overview

Special Conditions

- Final completion of all projects shall be achieved in the specified calendar days of each contract.
- All work on these packages is anticipated in CoSA ROW.
- Contractor should schedule work accordingly to complete the project within the specified days.
- Contractor must obtain CoSA ROW permit to start work.
 - <https://www.sanantonio.gov/PublicWorks/Services/Right-of-Way-and-Permits>

Project Overview

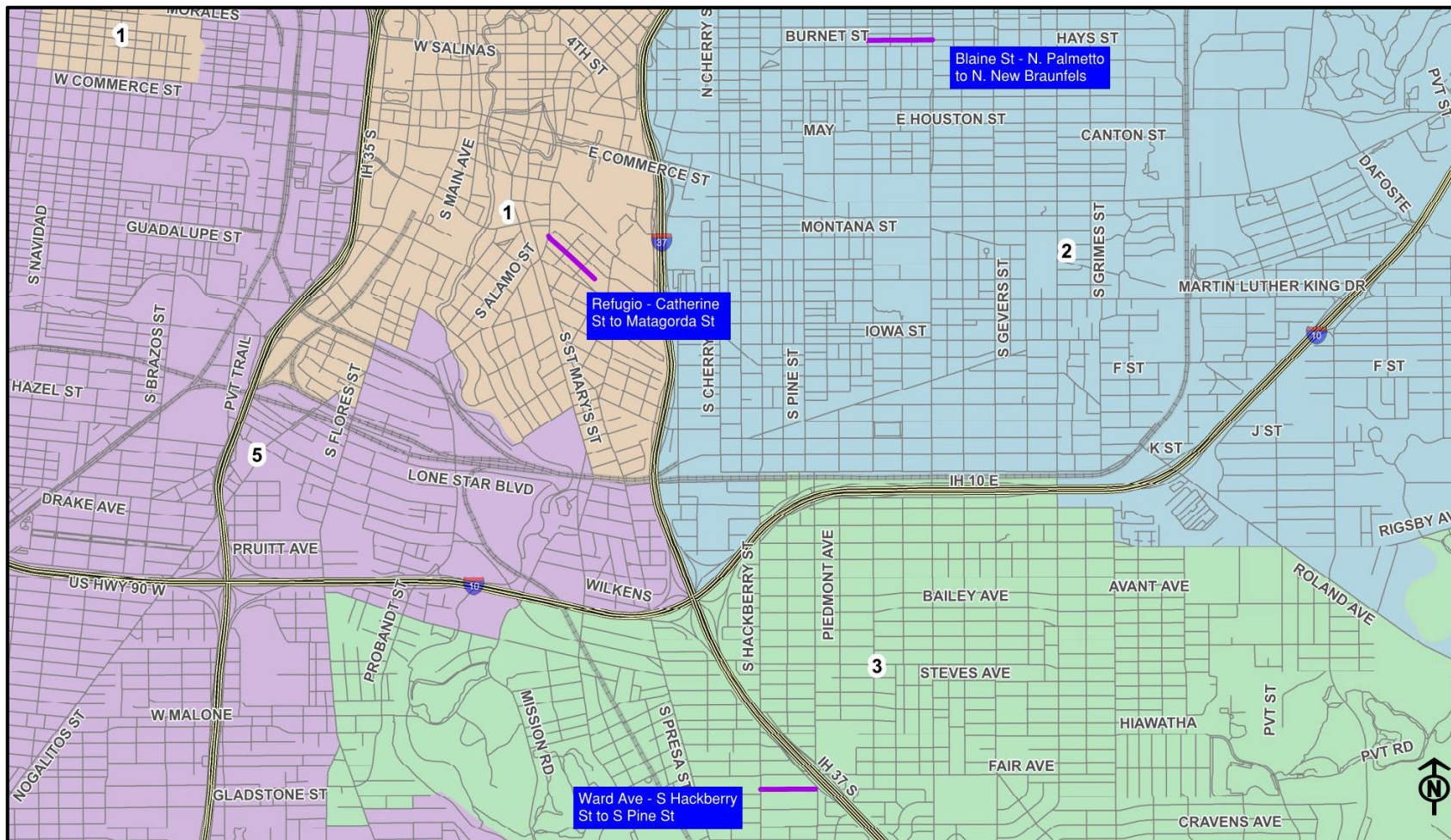
Supplemental Conditions

- Contractor shall perform the work with its own organization on at least 40% of the total original contract price.
- Liquidated damages will be assessed per package.
- Baseline Construction Schedule with NTP date of January 2nd (apparent low bidder) within one day of bid opening.

Project Details

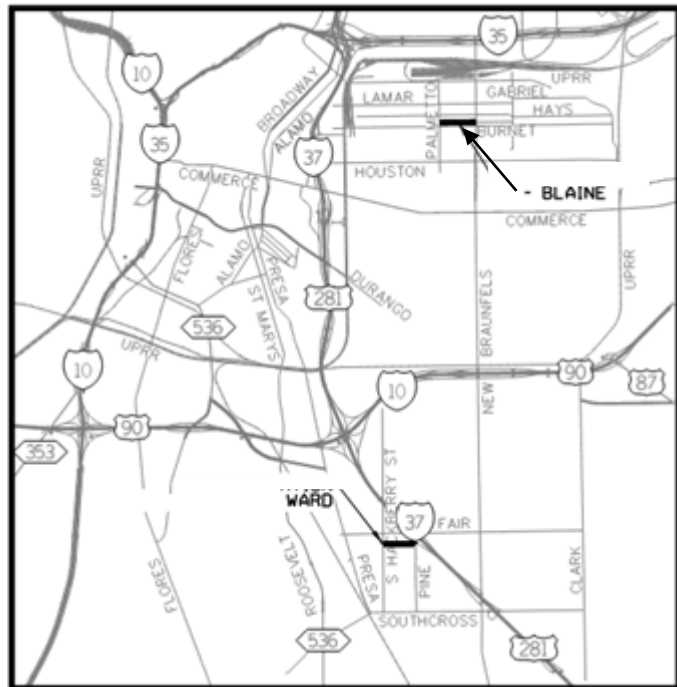


2023 SMP Package I (Refugio, Blaine St, Ward Ave)



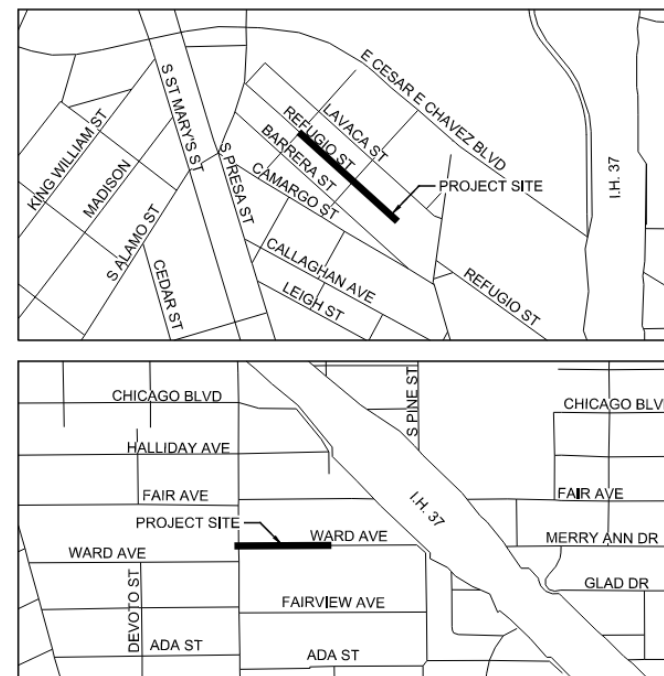
Project Overview – 2023 SMP Package I

Project Limits - Water



Blaine – N Palmetto to New Braunfels Ave.
 Ward Ave. – S Hackberry to Pine St.

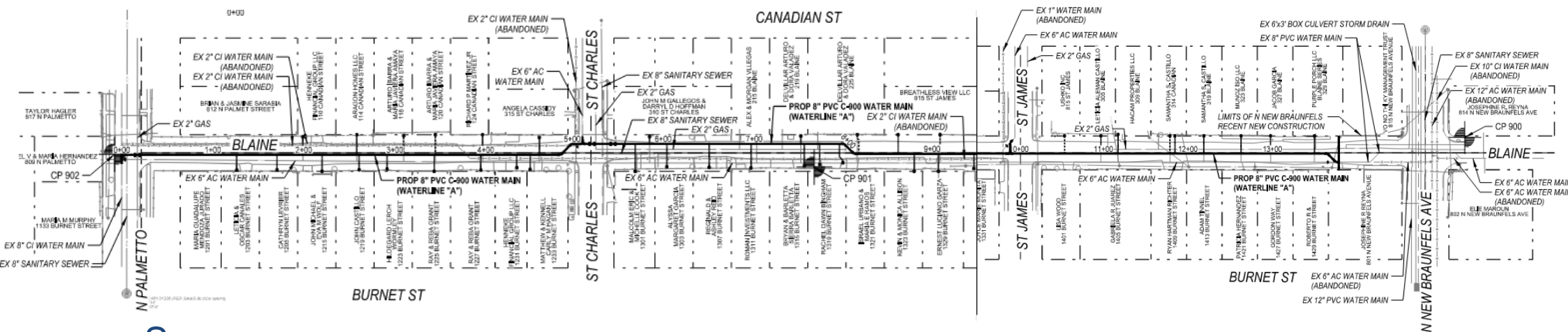
Project Limits - Sewer



Refugio St. – Catherine St. to Matagorda St.
 Ward Ave. – S Hackberry to Pine St.

Project Overview - Water

Blaine – N Palmetto to New Braunfels Ave.

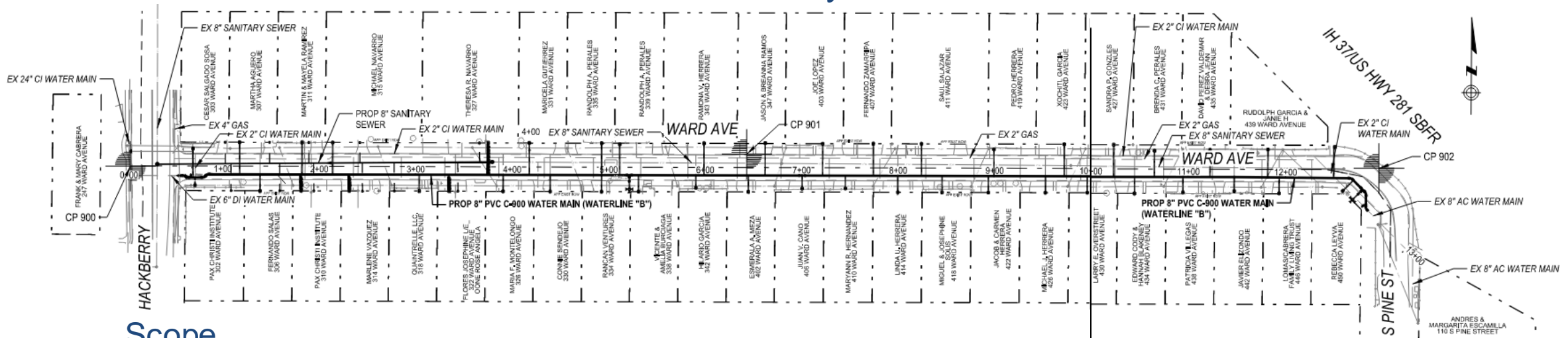


Scope

- Replace existing 6" AC with new 8" PVC C900 – approx. 1,400 L.F.
- Relay existing services and replace meter boxes – approx. 40 services
- 24" steel casing with 8" carrier pipe – approx. 18 L.F.
- Standard Trench Repair – 10" HMAC w/2" Type D
- 2" Mill & Overlay – St. Charles Intersection & St. James Intersection
- 6" AC pipe removal at tie-ins

Project Overview - Water

Ward Ave. – S Hackberry to S Pine St.

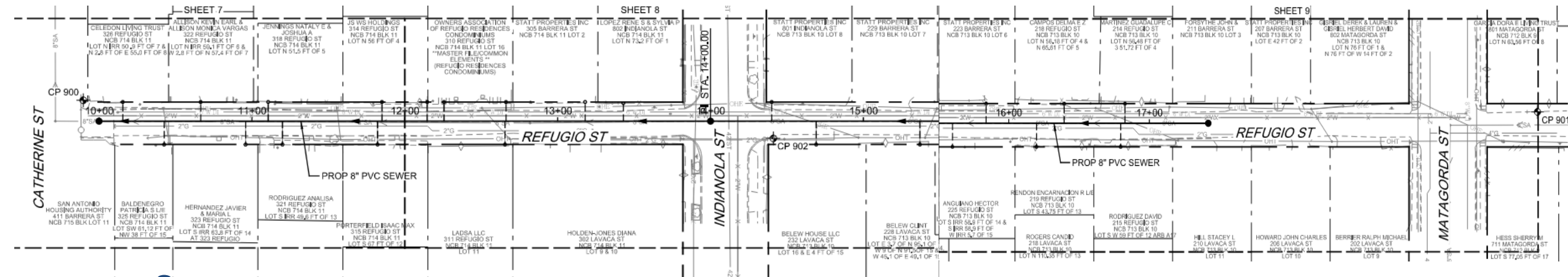


Scope

- Replace existing 2" CI with new 8" PVC C900 – approx. 1,250 L.F.
- Relay existing services and replace meter boxes – approx. 43 services
- Standard Trench Repair – 10" HMAC w/2" Type D
- 8" AC pipe removal at tie-in on Pine St.
- Critical Service – 406 Ward Ave.
- Addendum forthcoming – Adjustments for CPS Energy gas main replacement
- Make sure work remains within CoSA ROW at Ward and Pine.

Project Overview - Sewer

Refugio – Catherine St. to Matagorda

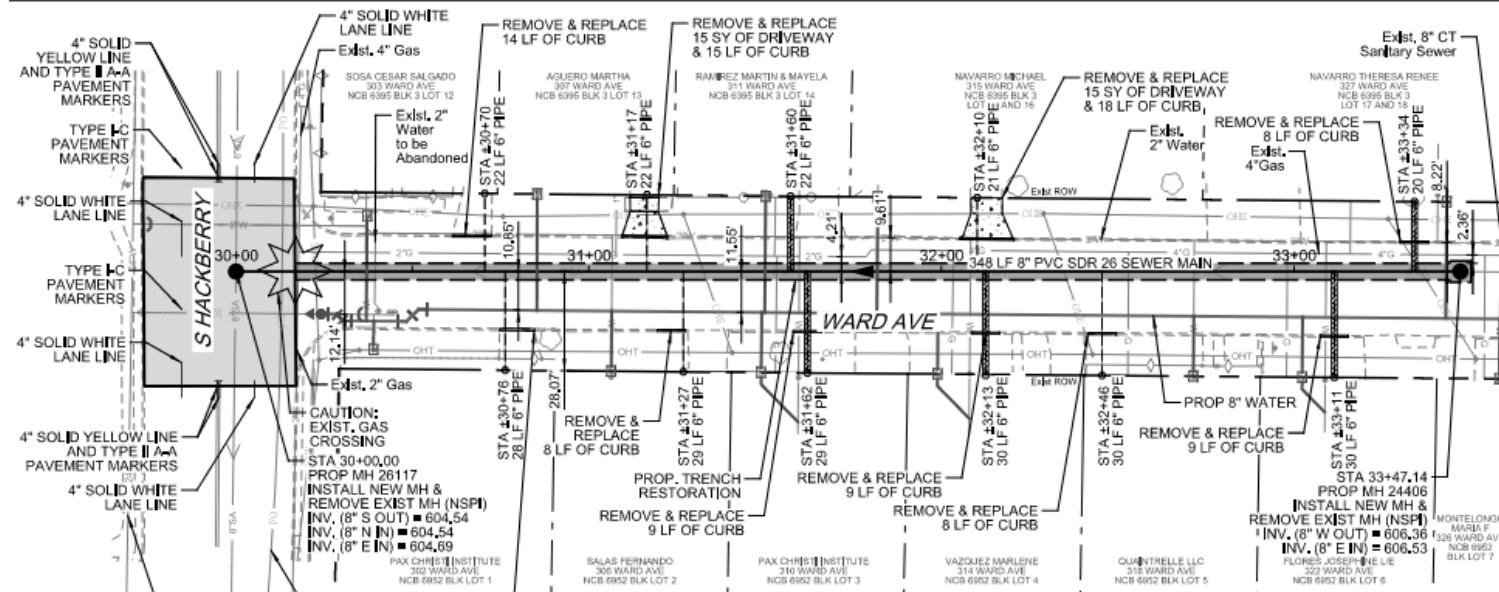


Scope

- Replace existing 8" PVC with new 8" SDR 26 PVC – approx. 740 L.F.
- Relay existing laterals w/2-way clean outs – approx. 23 laterals
- Remove & replace existing manholes x 3
- Standard Trench Repair – 10" HMAC w/2" Type D
- 2" Mill & Overlay – Indianola St. Intersection
- Concrete pavement removal & replacement at Catherine St.
- Concrete encasement for TCEQ compliance

Project Overview - Sewer

Ward Ave. – Hackberry east to nearest Manhole

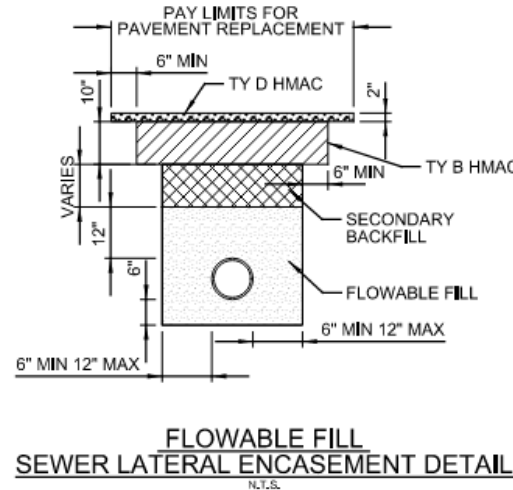
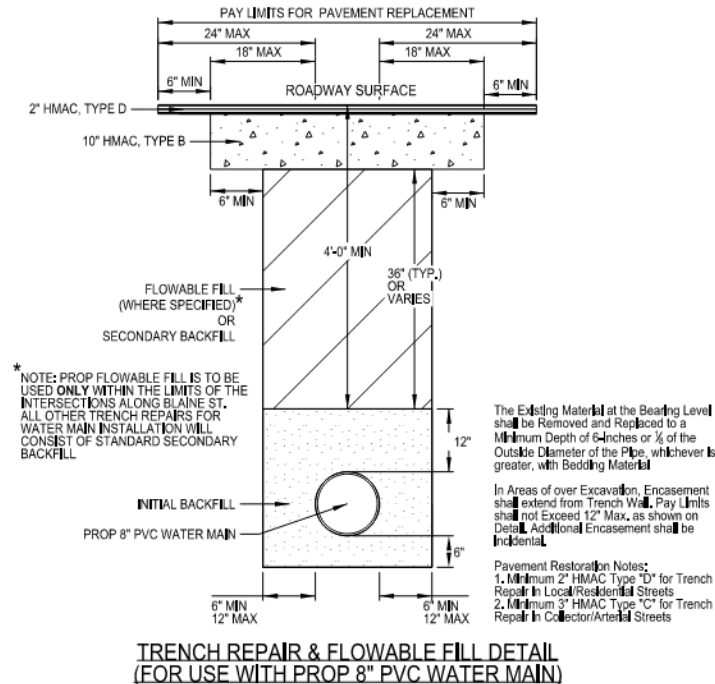


Scope

- Replace existing 8" CP with new 8" SDR 26 PVC – approx. 350 L.F.
- Relay existing laterals w/2-way clean outs – approx. 11 laterals
- Remove & replace existing manholes x 2
- Standard Trench Repair – 10" HMAC w/2" Type D
- 3" Mill & Overlay – Hackberry Intersection
- Addendum forthcoming – CPS Energy Gas Improvements

Project Details

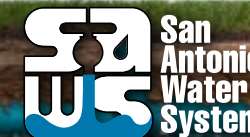
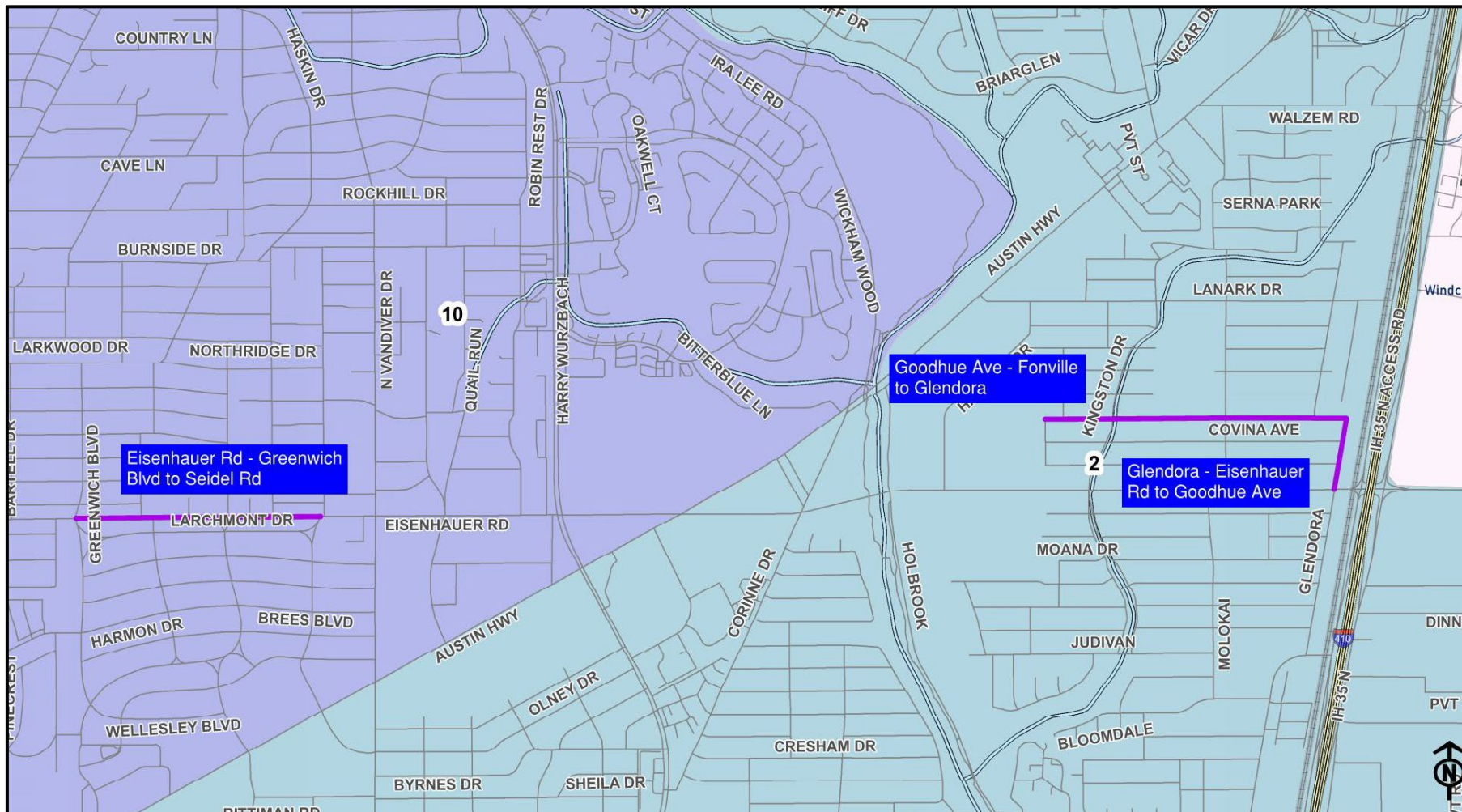
- Follow SAWS Standard Construction Specifications & Details
- Special Details



Project Details



2023 SMP Package II (Glendora, Goodhue, Eisenhower)



Project Overview

- Package II Scope

- Two sites: Glendora and Goodhue Ave, Eisenhower Rd
- Water – 5,233 LF of 6-, 8- and 12-inch PVC
- Sewer – 4,692 LF of 8-inch PVC and 184 LF of 8-inch CIPP

- Site Specific Scope

Glendora and Goodhue Ave (Fonville Dr to Eisenhower Rd)

- Water – 5,233 LF of 6-, 8- and 12-inch PVC
- Sewer – 2,393 LF of 8-inch PVC

Eisenhower Rd (Greenwich Blvd to Seidel Rd)

- Water – no work in scope
- Sewer – 2,299 LF of 8-inch PVC and 184 LF of 8-inch CIPP

- Follow Current Specifications Including July 2022 840 – Water Tie-In Update

Project Details

- Glendora and Goodhue Ave:
 - Existing Utilities:
 - Overhead electric
 - Overhead communications
 - Water main
 - Sewer main
 - Gas crossings
 - Fiber optic crossings
 - Underground communications crossings
 - Underground storm drain crossings
 - Pole bracing to be required where trench is within 5' – pole bracing is an allowance
 - Pavement restoration to be performed to limits shown in the plans
 - Trenches to be restored with 10" Type B HMA and 2" Type D HMA
 - 2" mill and overlay at Dell Oak and Goodhue intersection as shown in the plans
 - CoSA Tree Permit
 - No tree removal - tree protection, trimming, and pruning required

Project Details

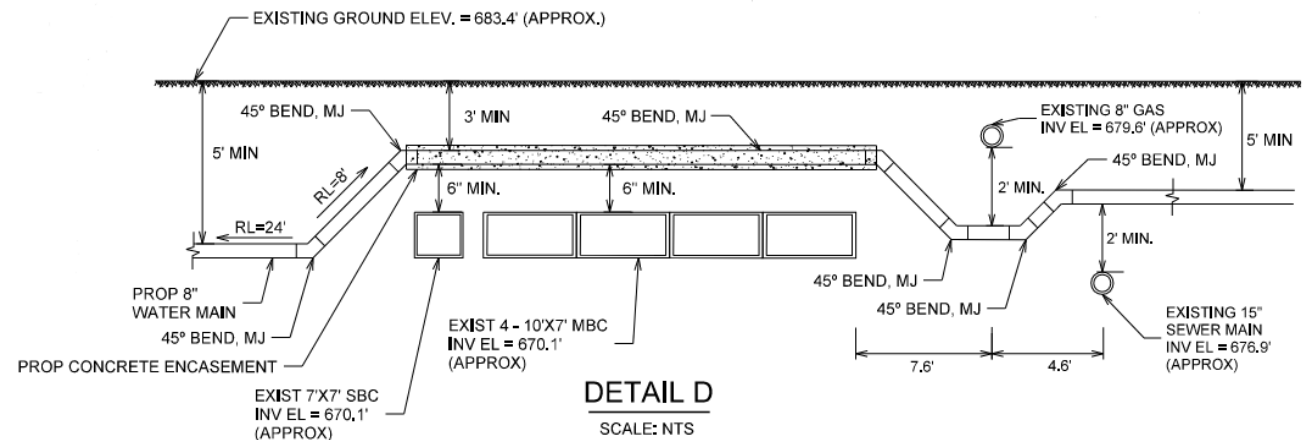
• Glendora and Goodhue Ave:

– Intersection of Goodhue and Kingston

- 1-7'x7' SBC
- 4-10'x7' MBC
- 8" Gas
- 15" Sewer

– 138 Goodhue Retaining Wall

- Contractor to salvage wall stone and replace to existing condition or better as shown in the plans
- Removal and replacement to be paid under items 103.4 and 506.1



Project Details

- **Glendora and Goodhue Ave:**

- Long Sewer Services

- As shown in the plans, contractor to field verify depth and location of services to confirm that the laterals can be installed per SAWS specs and details.
- Long services located at 7238 Glendora Ave and 399 Goodhue Ave

- 243 Goodhue Yard Piping

- Existing water meters on private property (one within driveway limits)
- Contractor to obtain ROE prior to work on private property

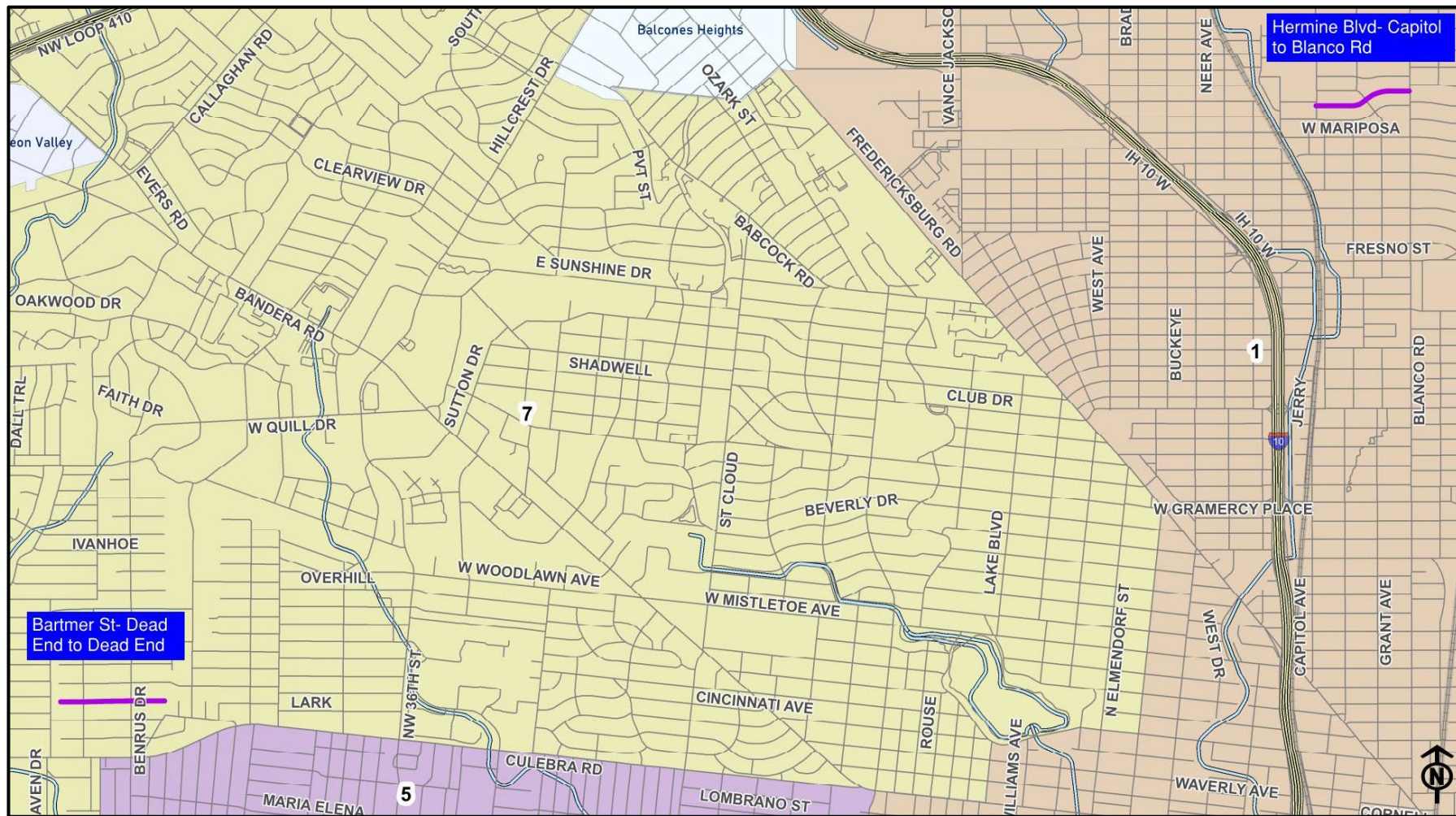


Project Details

- Eisenhauer Rd:
 - Existing Utilities:
 - Overhead electric
 - Water main
 - Sewer main
 - Gas crossings
 - Underground communications crossings
 - Pavement restoration to be performed to limits shown in the plans
 - Trenches to be restored with 12" Type B HMAC and 3" Type D HMAC
 - Extensive restoration as sewer main will be placed parallel to existing sidewalk
 - CoSA Tree Permit
 - No tree removal - tree protection, trimming, and pruning required
 - Pecan trees T23 and T24 to be protected by either by hand digging or hydro excavating as shown in the plans
 - 8" sewer line to be CIPP'ed due to encroaching 12" water line and 8" gas main in Eisenhauer

Project Details

2023 SMP Package III (Hermine Blvd, Bartmer Ave)



Project Details

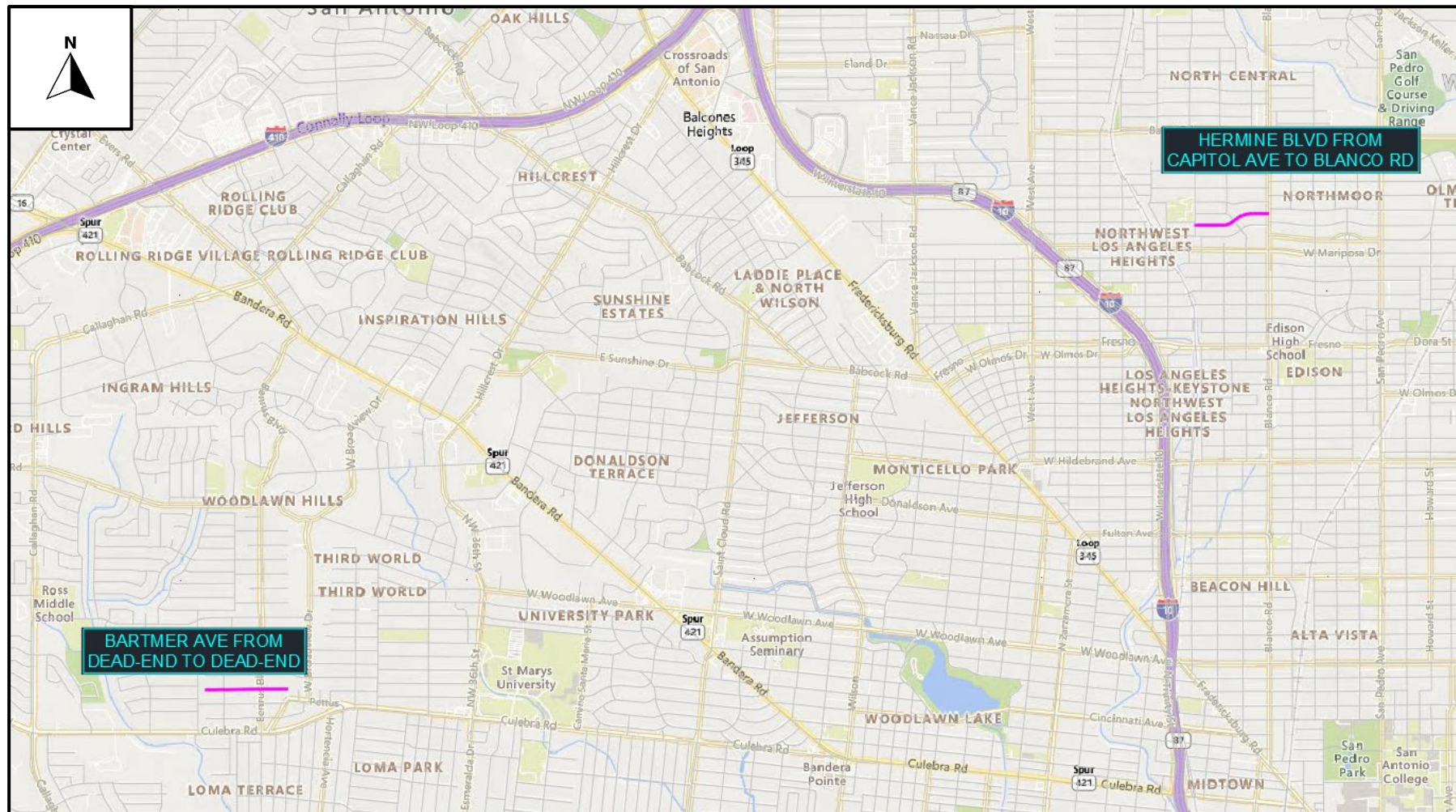
**2023 SMP Package III
(Hermine Blvd, Bartmer Ave)**



Package III Scope

- Two sites: Hermine Blvd. & Bartmer Ave.
- Water – 4,080 LF of 6- to 8-inch PVC
- Sewer – 1,820 LF of 8-inch PVC

- Project locations are within residential areas, be mindful of surroundings and residents
- All work is within the ROW, no anticipated easements



Project Details (Package III)

• Site Specific Scope

Hermine Blvd. (Capitol Ave. to Blanco Rd.)

- Water – 1,898 LF of 8-inch PVC
(some 6-inch PVC at tie-ins)
- Sewer – 1,395 LF of 8-inch PVC
- Existing Utilities
 - Overhead electric, sanitary sewer, water main, gas, and fiber optic



• Site Specific Scope

Bartmer Ave. (Dead-End to Dead-End.)

- Water – 2,162 LF of 8-inch PVC
(some 6-inch PVC at tie-ins)
- Sewer – 425 LF of 8-inch PVC (Brendell St. to Dead End)
- Existing Utilities
 - Overhead electric, sanitary sewer, water main, gas, fiber optic, and storm drain



Project Details (Package III)

- Hermine Blvd. (Water):
 - Residential road with narrow ROW (approx. 50'), proposed water goes north of the centerline and then transitions south on Hermine Blvd. adjacent to exist. 6" AC water main (potholes conducted). Contractor shall use caution while excavating as to not disturb the existing 6" AC water main and protect AC water main if exposed as necessary (NSPI).
 - Crossings at exist. sanitary sewer mains to include flowable fill around prop. water main as shown on plans.
 - Flowable fill quantity on water plans includes encasement around prop. for water mains not achieving septation distance per 30 TAC 290 (refer to plans).
 - Removal of AC pipe at tie-ins.
 - Verify water services for each resident – Relay/relocate as shown on plans, water meters in driveways shall be traffic rated, and water meters in sidewalks will be relocated towards the ROW and outside of sidewalk.
 - Customer Shut off valves to be added or replaced for every water service.
 - Three (3) new fire hydrants – Contractor to remove and salvage existing fire hydrants.
 - Pavement and site restoration to be performed to limits shown in the plans.
 - Trench to be restored with 10" Type B HMA and 2" Type D HMA.
 - 2" mill and overlay at Grant Avenue intersection.
 - Sidewalk, curb and retaining wall replacement as necessary at water service relays and relocates.
 - Removal of sanitary sewer pipe and one (1) manhole for water main installation

Project Details (Package III)

- Hermine Blvd. (Sewer):
 - Sewer main to be removed and replaced with a section to be abandoned.
 - Pre and Post TV Inspections, bypass plan, and traffic control and phasing plan.
 - Five (5) standard sewer manholes, one (1) drop manhole, one (1) adjustment manhole, and three (3) manhole removals; extra depth required.
 - All sewer lateral locations shall be field verified prior to construction (NSPI).
 - All sewer laterals are to be replaced to the property line with 2-way cleanout.
 - Concrete encasement on sewer plans included for encasing prop. sewer main not achieving separation distance per 30 TAC 217.53 (refer to plans).
 - Pavement restoration to be performed to limits shown in the plans
 - Trench to be restored with 10” Type B HMAC and 2” Type D HMAC
 - Sidewalk, curb and retaining wall replacement as necessary at sewer laterals

Project Details (Package III)

- Bartmer Ave. (Water):
 - Residential road with narrow ROW (approx. 50'), proposed water begins south of the centerline on Bartmer Ave. adjacent to exist 6" AC water main, then transitions north at Brendell Blvd. and Bartmer Ave. intersection to replaced-in-place, and then transitions back south at Benrus Blvd. and Bartmer Ave. intersection. Contractor shall use caution while excavating as to not disturb the existing 6" AC water main and protect AC water main if exposed as necessary (NSPI).
 - A temporary water main will be required to be installed to allow services for residential homes on Bartmer Ave. from Brendell Blvd. to Benrus Blvd. intersections (refer to plans).
 - Crossings at exist. sanitary sewer mains and storm drains to include flowable fill around prop. water main as shown on plans.
 - Flowable fill quantity on water plans includes encasing around prop. for water mains not achieving septation distance per 30 TAC 290 (refer to plans).
 - Removal of AC pipe at tie-ins and at replaced-in-place design.
 - Verify water services for each resident – Relay/relocate as shown on plans.
 - Customer Shut off valves to be added or replaced for every water service.
 - Five (5) new fire hydrants – Contractor to remove and salvage existing fire hydrants.
 - Pavement and site restoration to be performed to limits shown in the plans.
 - Trench to be restored with 10" Type B HMA and 2" Type D HMA.
 - 2" mill and overlay at Brendell Blvd. Benrus Blvd. intersection.
 - Sidewalk, curb and retaining wall replacement as necessary at water service relays and relocates.

Project Details (Package III)

- Bartmer Ave. (Sewer):
 - Sewer main to be removed and replaced with a section to be abandoned.
 - Pre and Post TV Inspections, bypass plan, and traffic control and phasing plan.
 - Two (2) standard sewer manholes and one (1) manhole abandonment; extra depth required.
 - All sewer lateral locations shall be field verified prior to construction (NSPI).
 - All sewer laterals are to be replaced to the property line with 2-way cleanout.
 - Pavement restoration to be performed to limits shown in the plans
 - Trench to be restored with 10” Type B HMAC and 2” Type D HMAC

Project Details (Package III)

- Hermine Blvd. & Bartmer Ave. (Other Details):
 - CoSA Tree Permit
 - Applies to root protection and tree trimming at locations where branches overhang onto street
 - One tree removal at 908 Hermine Blvd.
 - Contractor shall hand dig any water service, fire hydrant branch, or sewer lateral connections within 1/2 of the tree root protection zone (NSPI)
 - Power poles within project area
 - Contractor to verify the distance of power poles along project corridor in relation to face of utility trench and coordinate with CPS to determine if poles will be subject to bracing.
 - Contractor to coordinate with residents and CoSA Public Services for traffic control plan.



Bartmer Ave. & Brendell St. intersection (Facing East)

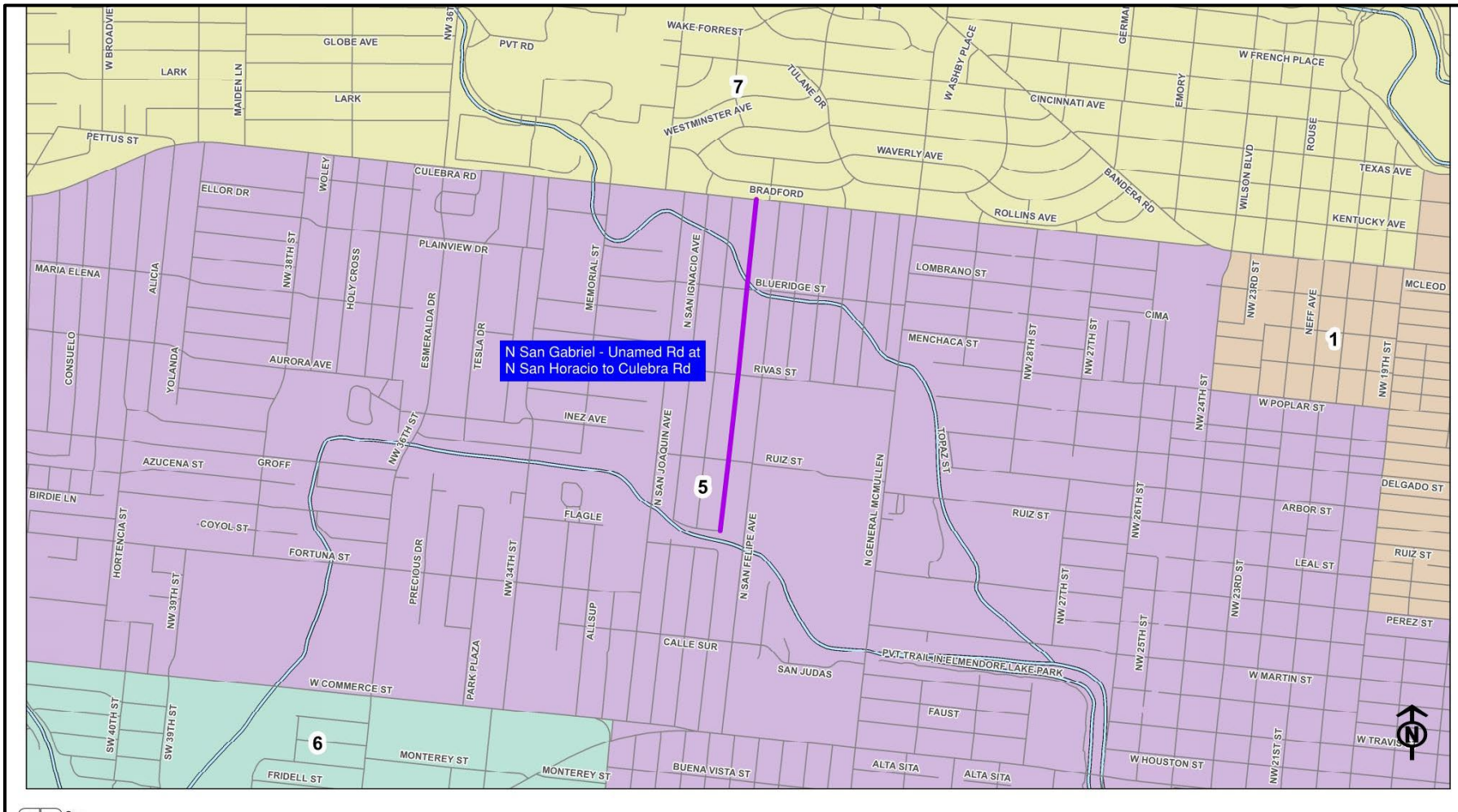


Hermine Blvd. MH #2559 (Facing East)

Project Details

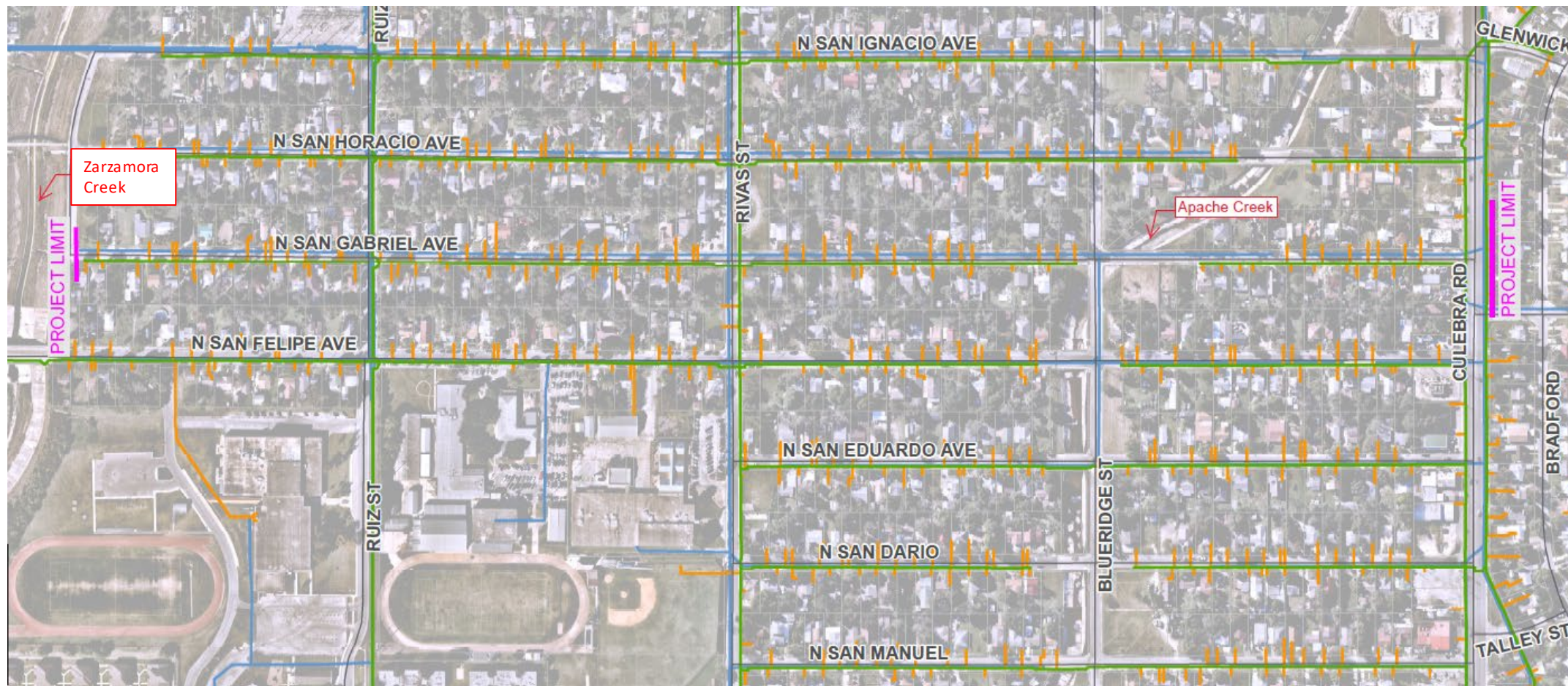


2023 SMP Package IV (N. San Gabriel)



Project Overview

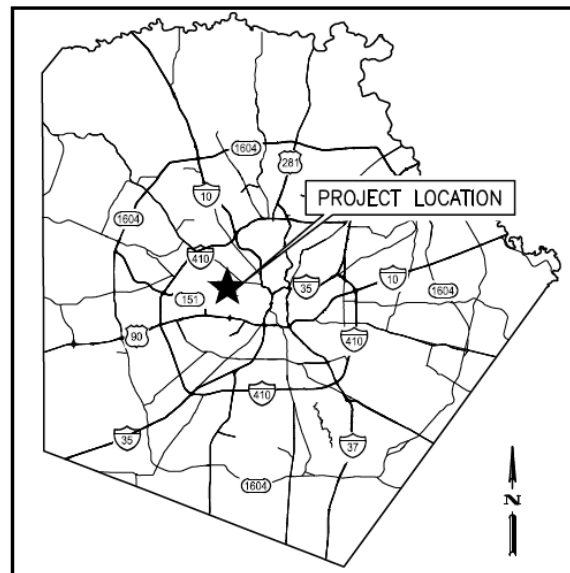
2023 SMP Package IV (N. San Gabriel)



Project Overview

General Information

- In anticipation of the City of San Antonio's Street Maintenance Program (SMP) project SAWS wishes to replace existing utility infrastructure as follows:
 - N. San Gabriel St from Dartmouth St to Culebra Rd:
Replace approximately 2,722 LF of 8"-10" PVC/VCP/CP sewer main and manholes
 - N. San Gabriel St from Dartmouth St to Culebra Rd:
Replace approximately 3,870 LF of 6"-12" AC/CI water main.
- Project crosses Apache Creek and near Zarzamora Creek



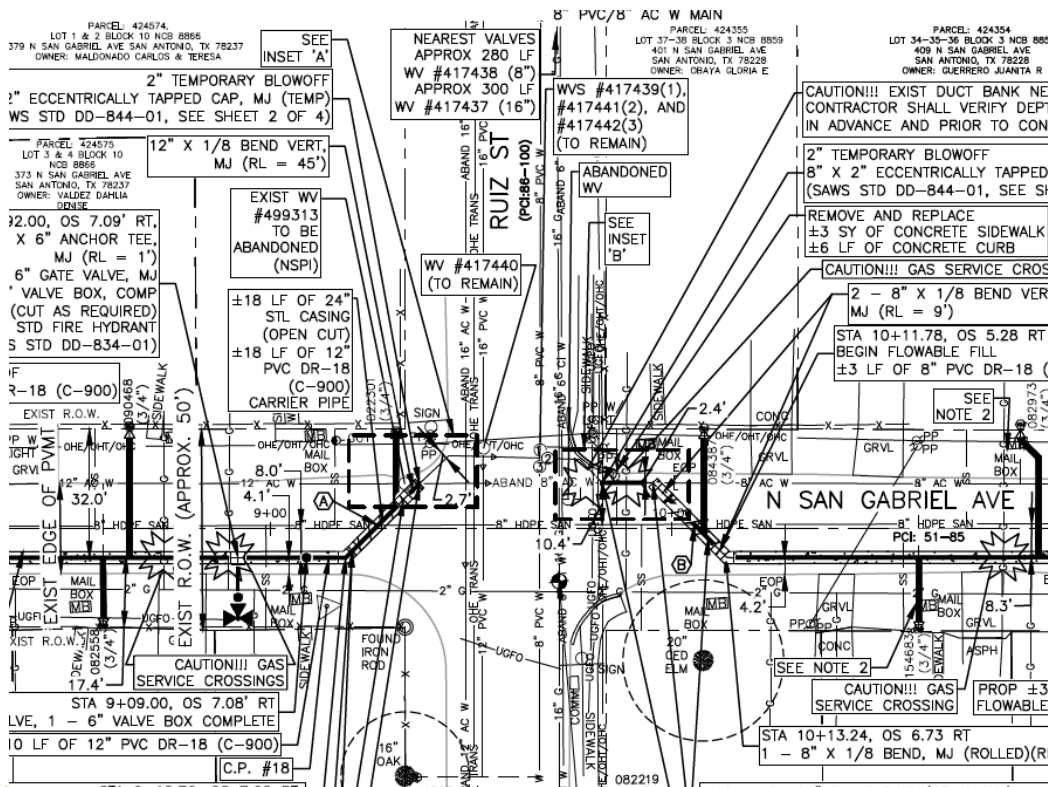
VICINITY MAP

N.T.S.



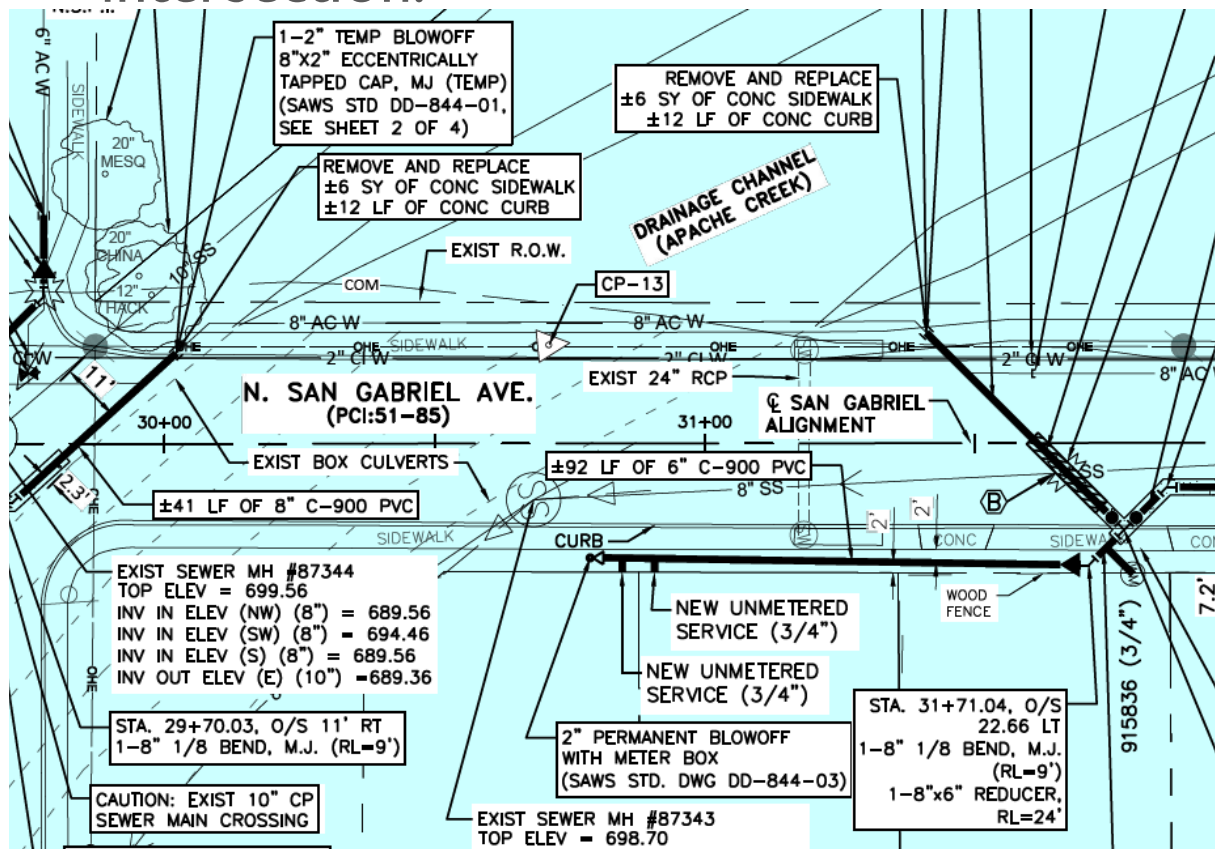
Project Details (Package IV)

- Water main on Ruiz and Rivas St were recently replaced, tie-ins shall occur before and after these intersections for water main installation
- Steel Casing (Open Cut) on proposed water mains that cross below exist sewer mains.
- South end of water main at Dartmouth is a Dead End



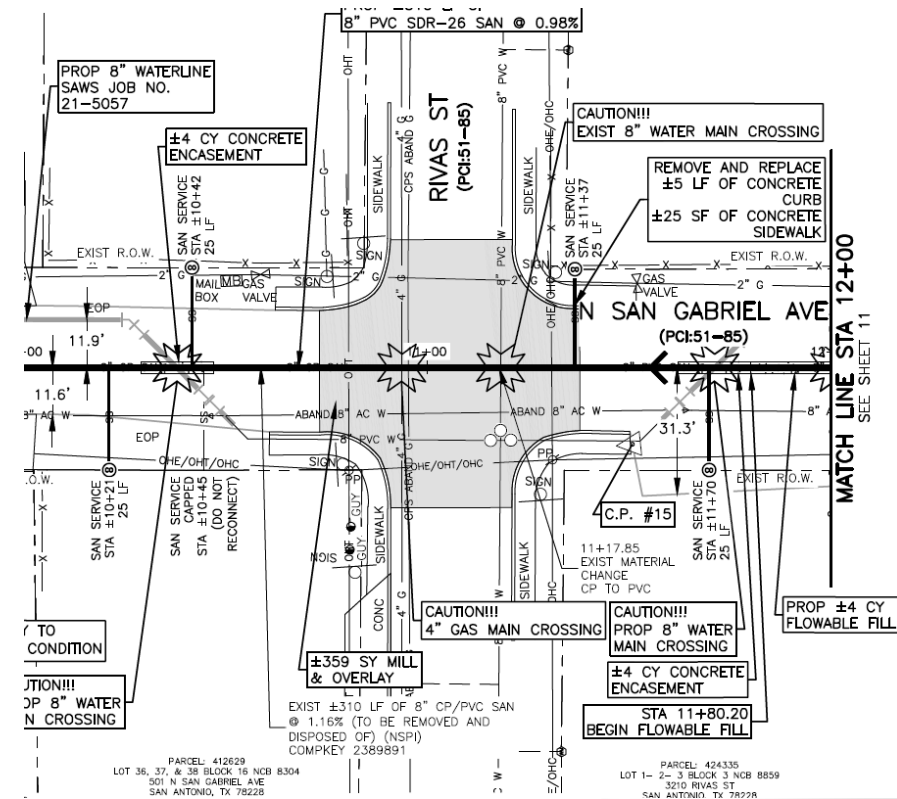
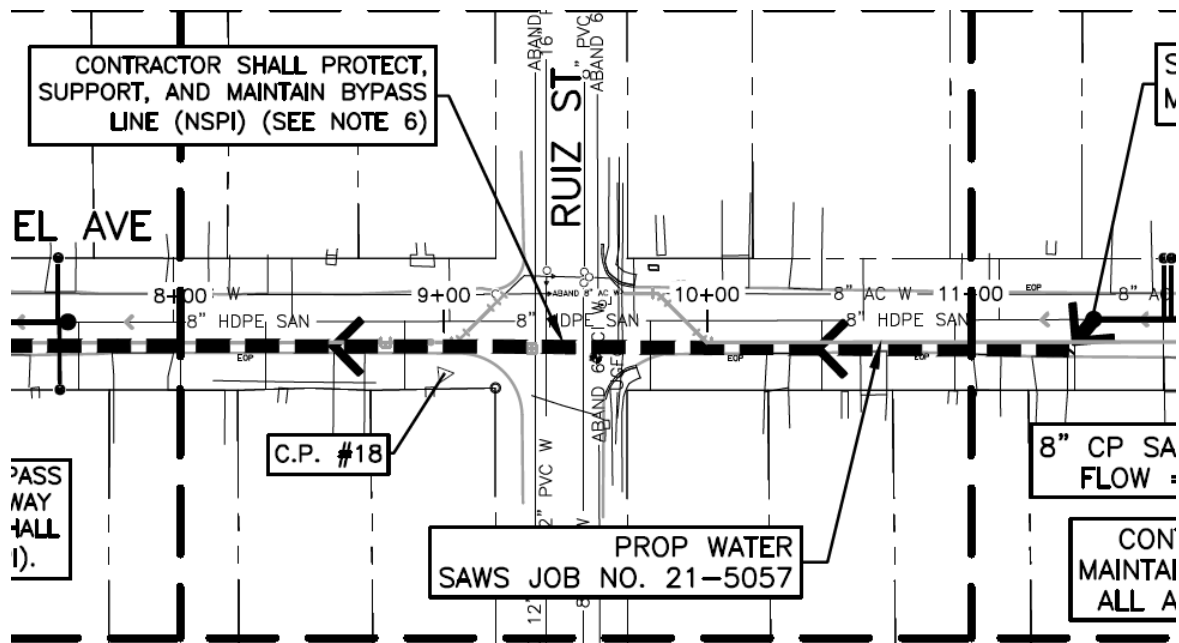
Project Details (Package IV)

- Water tie-ins will be around existing Apache Creek bridge culvert near Blueridge St intersection.



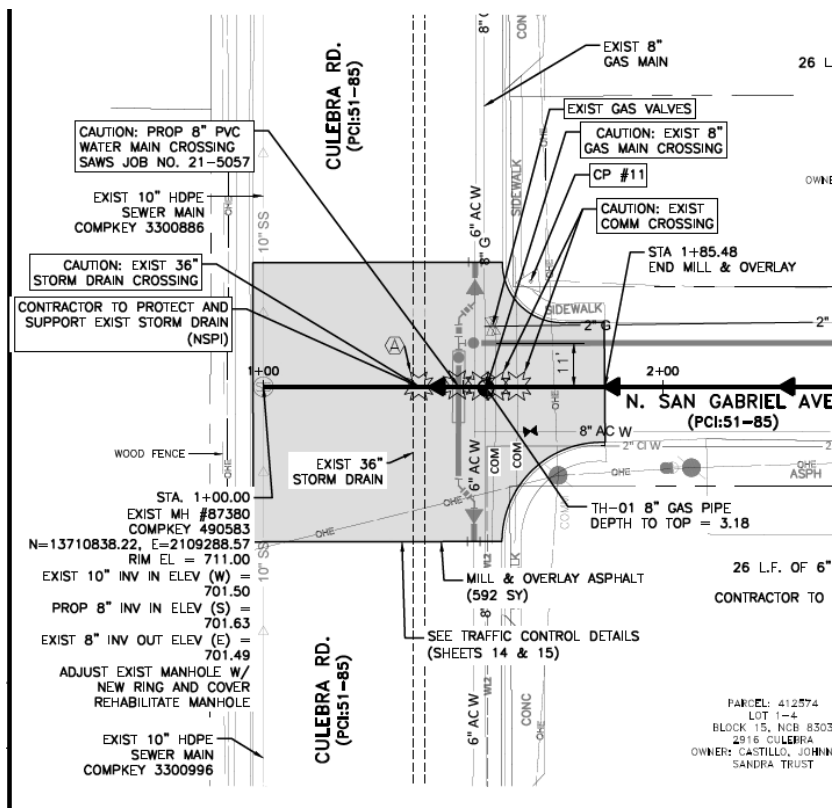
Project Details (Package IV)

- Sewer main crossing Ruiz St intersection was recently pipebursted, with HDPE, exist pipe segment to remain and be skipped during sewer main installation
- Rivas intersection to be mill and overlaid with 2" Type D
- Exist 18" RCP Storm Drain Crossing at Blueridge Drive intersection



Project Details (Package IV)

- Sewer installation shall cross all of Culebra Rd with Heavy Traffic, TCP will require phasing
- Culebra Rd intersection shall be mill and overlay with 3" Type D and backfilled with Flowable Fill
- Exist 36" Storm Drain Crossing



Project Details

- All work is within the ROW, no easements are anticipated
- Normal working hours are generally anticipated with the exceptions of a few tie-ins. Refer to General Conditions
- Asbestos handling and removal work plan to be in accordance with Specification Item 3000
- Customer Shut off valves to be added or replaced for every water service
- Project locations are within mostly residential areas, be mindful of surroundings and residents. Some commercial properties at Culebra and Church at Rivas intersection.
- Contractor shall repair and/or replace existing mailboxes to original or better condition if damaged during construction (NSPI)
- CoSA Tree Department coordination will be required. Contractor shall hand dig any water service, fire hydrant branch, or sewer lateral connections within 1/2 of the tree root protection zone (NSPI)
- Contractor shall perform a morning shutdown for the segment of water main that supplies critical service at 540 N San Gabriel. Contractor to notify and coordinate with property owner.
- Prior to tie-ins, any shutdowns of any size must be coordinated 25 calendar days in advance.

QUESTIONS?

Reminder: Oral statements or discussion during the pre-bid meeting today will not be binding, nor will it change or affect the terms or conditions within the Plans and Specifications of this Project. Changes, if any, will be addressed in writing only via an Addendum.

2023 SMP Packages I - IV

Sirahuen Guajardo Jr., P.E.

Project Engineer

Efrain Aguirre, P.E.

Project Engineer

Cristian Cavazos

Graduate Engineer I

Florinda Gonzales

Contract Administrator

Stella Manzello

Contract Administrator

Marisol V. Robles

SMWVB Program Manager, SAWS

John Mooneyham, P.E. (KCI)

Engineer of Record for Pkg I

Chris Boentges, P.E. (K Friese)

Engineer of Record for Pkg II

Amy Y. Ramirez, P.E. (WGI)

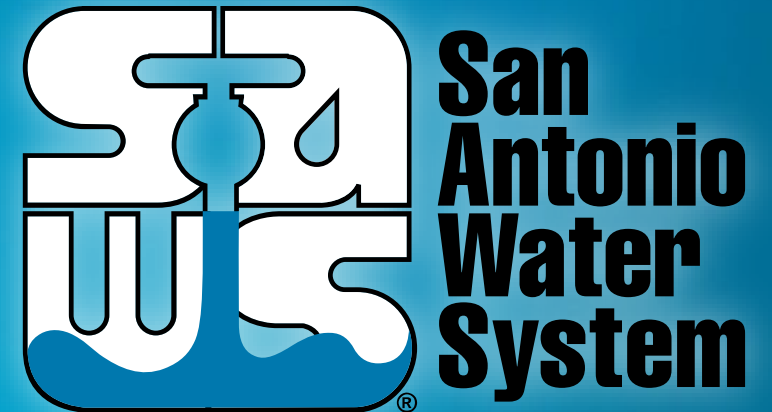
Engineer of Record for Pkg III

Steven Thai, P.E. (BGE)

Engineer of Record for Pkg IV

Marisol V. Robles

SMWVB Program Manager, SAWS



Non- Mandatory Pre-Bid Meeting

August 31, 2022